

## Etigam packing material

The overview below shows the origin of various packing materials used by Etigam, identified by their alphanumeric code. Please refer to the recycling regulations that are applicable in the relevant country. The images below are not actual size.

Packing material	Alphanumeric code	Image
<u>outer box</u> corrugated cardboard	PAP 20	
<u>bubble envelope</u> paper low density polyethylene	PAP 22 LDPE 4	
<u>inner box (BOX L)</u> carton	PAP 21	

inner box (BOX S)  
carton

PAP 21



shrink foil transparent  
low density polyethylene

LDPE 4



foil black  
low density polyethylene

LDPE 4



zip lock bag transparent  
low density polyethylene

LDPE 4



zip lock bag black  
low density polyethylene

LDPE 4



filling chips  
polystyrene

PS 6



bubble wrap  
low density polyethylene

LDPE 4



filling paper  
paper

PAP 22



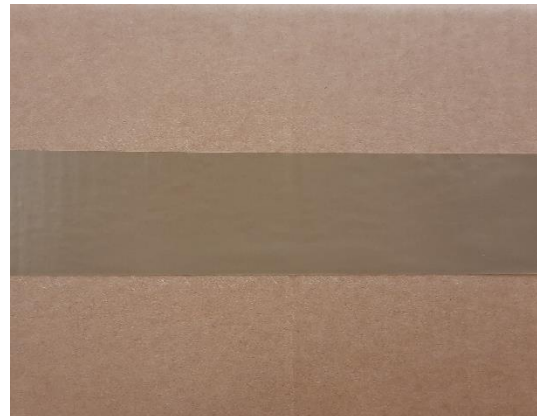
packing list envelope  
low density polyethylene

LDPE 4



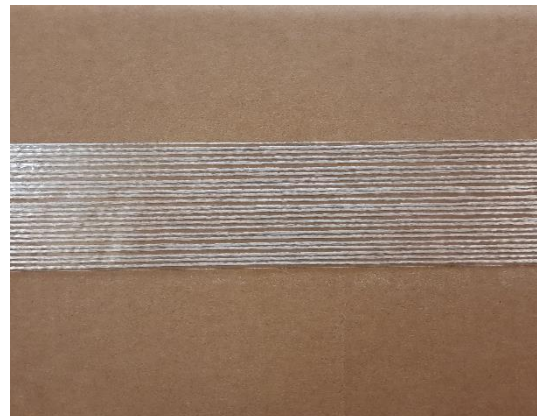
tape brown  
polyvinylchloride

PVC 3



tape filament  
polypropylene  
reinforced by fiberglass wire

PP 5



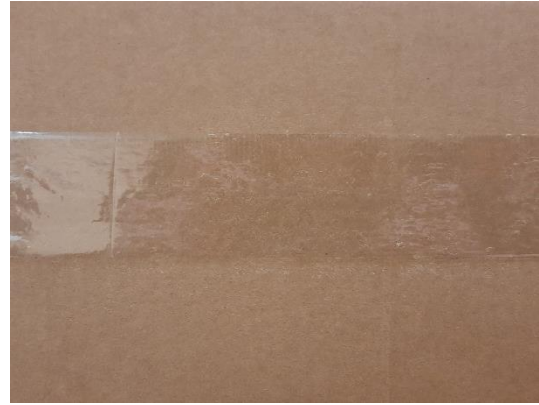
tape Etigam  
polyvinylchloride

PVC 3



tape transparent  
polypropylene

PP 5



pallet strap  
polyester

PET 1



styrofoam  
polystyrene

PS 6

